

easyJet

INFLIGHT

DESTINATIONS FASHION BUSINESS PROPERTY FREE



ON THE SNAIL TRAIL

GOURMET GASTROPODS
COME OUT OF THEIR SHELL

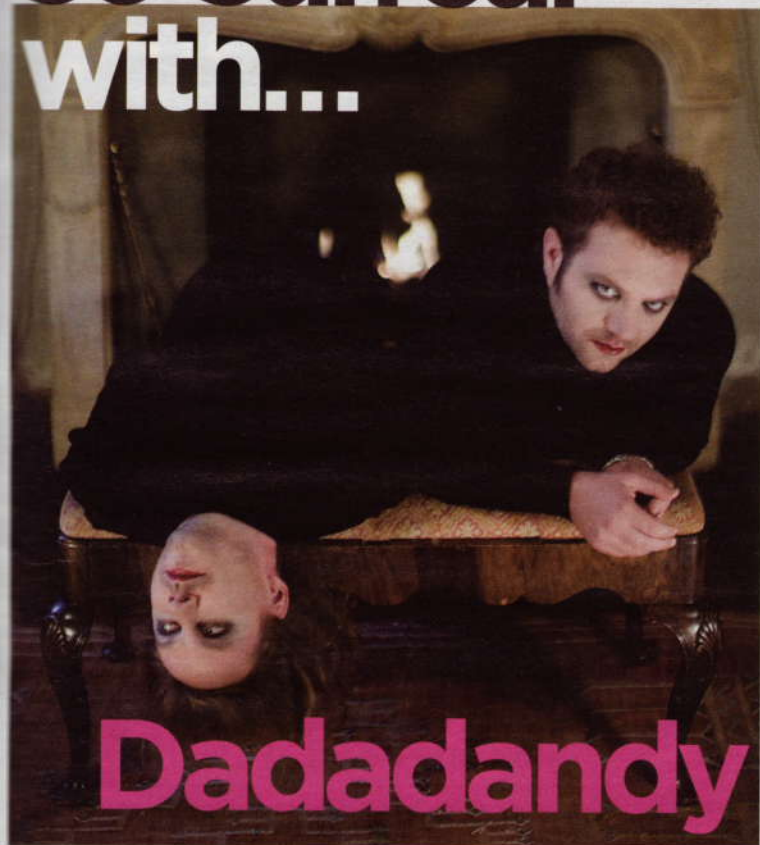
 **PLUS**

STARTER'S ORDERS
PIG RACING TAKES THE
CHECKERED FLAG

FOOD FOR THOUGHT
FORAGING FOR AN
ITALIAN DINNER

THE SOUND OF SILENTS
OLD FILMS, NEW MUSIC

So Surreal with...



Dadadandy

→ Surrealist thought emerged around 1920 and celebrates the unconscious mind, giving rise to some pretty mad stuff. We asked Paris-based art outfit Dadadandy (www.dadadandy.com), who have created a Surrealist art installation at Selfridges's store in London, to tell us their top Surrealist spots in Paris.

1/Jules Verne Restaurant

Located on the second floor of the Eiffel Tower, this restaurant has its own private elevator access. Sitting in the heart of the intricate iron structure, full of angles and perspectives, the Jules Verne looks out over Paris from 125m above ground. Chef Alain Ducasse took the helm as *chef de cuisine* on 1st January, 2007.
The Eiffel Tower
Tel. +33 (0)1 4555 6144

2/Dans Le Noir

Dans Le Noir is a restaurant just around the corner from the Centre Pompidou. The waiting staff are all blind and you eat in total darkness. Even mobile phones and watches with lighted faces must all be left in lockers outside the dining room so you can experience, as closely as possible, what it would be like to be blind.
51 rue Quincampoix
Tel. +33 (0)1 4277 9804

3/The Department of Egyptian Antiquities, Musée du Louvre

Following the history of the peoples of the Nile valley—from the late prehistoric era (circa 4000 BC) to the Christian period (4th century AD)—the ground floor features a thematic installation centred on the major aspects of Egyptian civilization. The 1st floor presents the development of Egyptian art. Genius.
www.louvre.fr

4/Musée Gustave Moreau

The painter Gustave Moreau himself had the museum designed so that his works could be displayed the way he wanted. It was built at his expense, at the very spot where he lived and worked all his life. Everywhere you'll find the disconcerting mythological, literary and biblical themes Moreau loved. The painter's approach was initially academic and then symbolist, before becoming surprisingly modern and almost abstract in his last years. Writer, poet and theorist André Breton, the founder of the Surrealist movement, cited the museum as a great inspiration.
14 rue de la Rochefoucauld
www.musee-moreau.fr

5/Parc de Buttes-Chaumont ▼

Four years in the making, it opened at the time of the 1867 Universal Exhibition and became a popular park full of attractions. What could be described as surreal is the effect derived from the unexpected spaces and from the dimensions of the landscape.
Rues Botzaris, Manin

